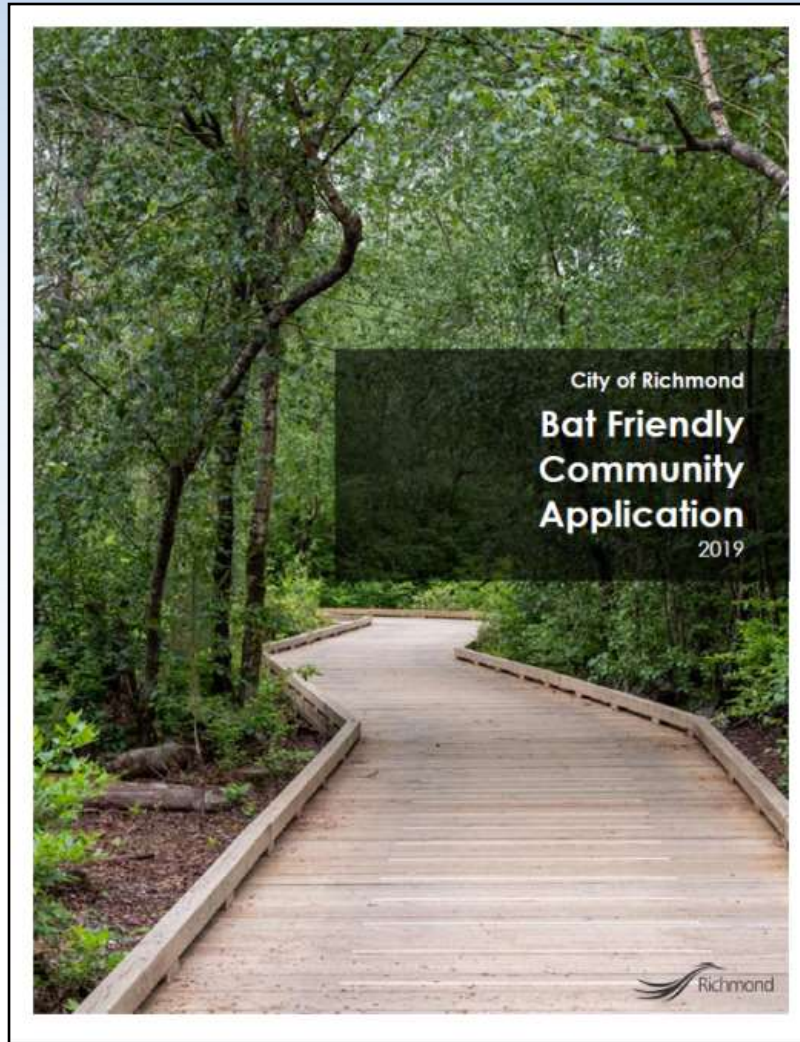




The City of Richmond A Bat-Friendly Community



A Bat-Friendly Community



Bat Friendly Certification Program Criteria: Protection of Bat Habitat

Ecological Network Management Strategy



Bat Friendly Certification Program Criteria: Protection of Bat Habitat

Official Community Plan

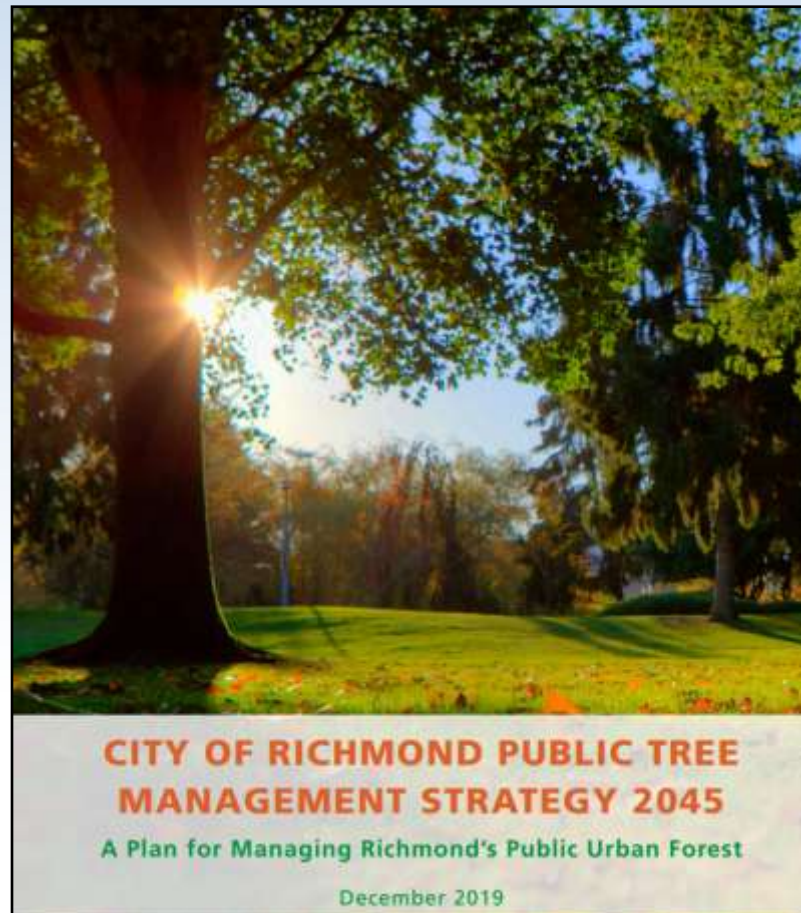


1.0 Moving Towards a Sustainable Community

1.1 A New Plan for the Future—2041

Bat Friendly Certification Program Criteria: Protection of Bat Habitat

Tree Management Strategy 2045



Bat Friendly Certification Program Criteria: Protection of Bat Habitat

Enhanced Pesticide Management Program



Richmond's Pesticide Use
Control Bylaw

Live
green
RICHMOND

Many pesticides can no longer be used for garden
and lawn beautification on residential and City land.

The graphic features a background of green grass with a yellow dandelion flower. The text is overlaid on this background. The 'Live green RICHMOND' logo includes a stylized white bird or leaf shape above the word 'green'.

Bat Friendly Certification Program Criteria: Protection of Bat Habitat

Riparian Response Strategy



Bat Friendly Certification Program Criteria: Protection of Bat Habitat

Bridgeport Industrial Park Pollinator Pasture

& Terra Nova Public Art Pollinator Meadow



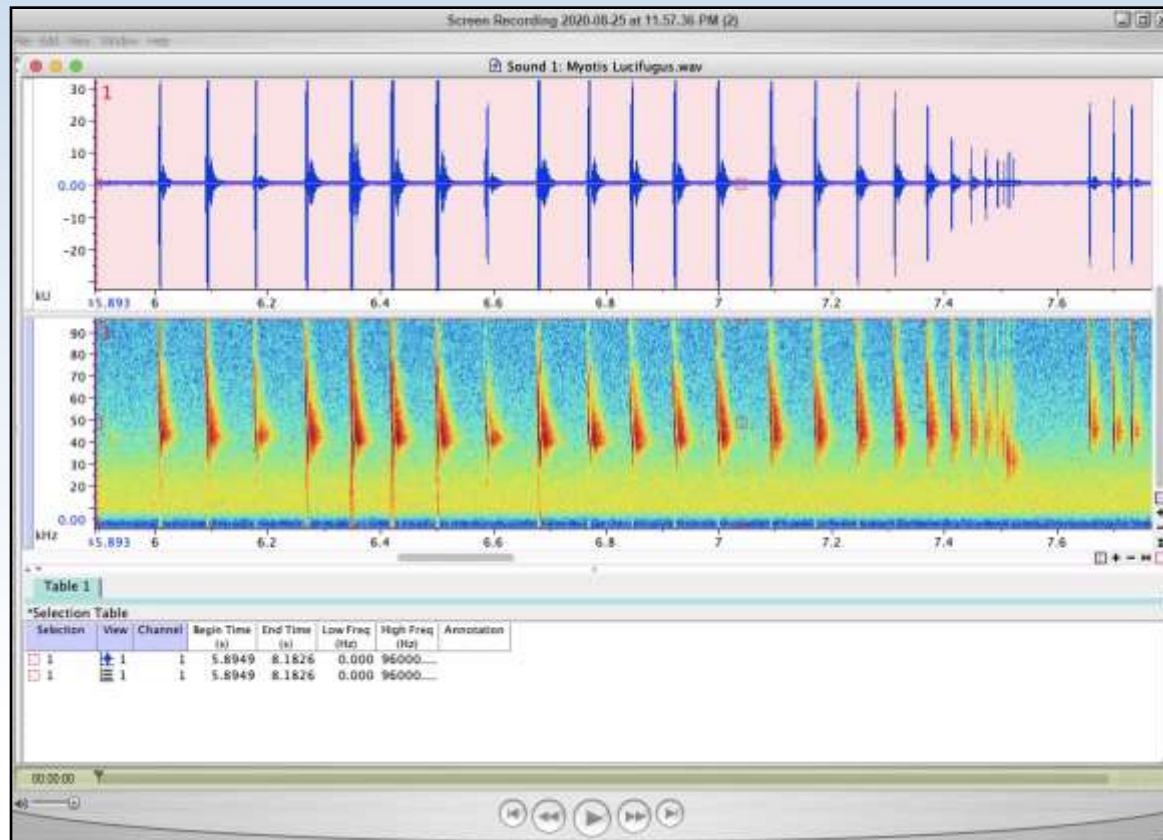
Bat Friendly Certification Program Criteria: Protection of Bat Habitat

- New Bat Condo and Satellite Bat Boxes



Bat Friendly Certification Program Criteria: Protection of Bat Habitat

- Acoustic Monitoring



Bat Friendly Certification Program Criteria: Providing Information about Bats

Mitchell Island Environmental Stewardship Event



Bat Friendly Certification Program Criteria: Opportunities for Learning

Richmond Nature Park Student Program



Bat Friendly Certification Program Criteria: Opportunities for Learning

Public Open House 2019



Bat Friendly Certification Program Criteria: Opportunities for Learning

Database



What's Next?

Richmond Nectar Trail

Bats at the next REaDY Summit

Continuous learning and continuous improvement.



If you have any questions, please reach out to me at wmills@richmond.ca or ask me at the panel discussion